

VICINITY MAP
1 INCH = 10 MILES

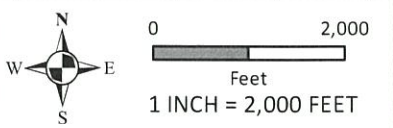
LEGEND

-  HCFCD Drainage Network
-  Detention Service Area
-  City Limits

*2019 ESRI IMAGERY

EXHIBIT 1
VICINITY MAP

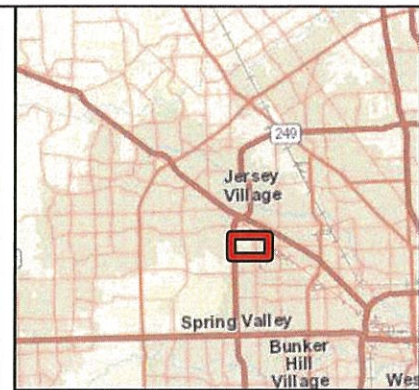
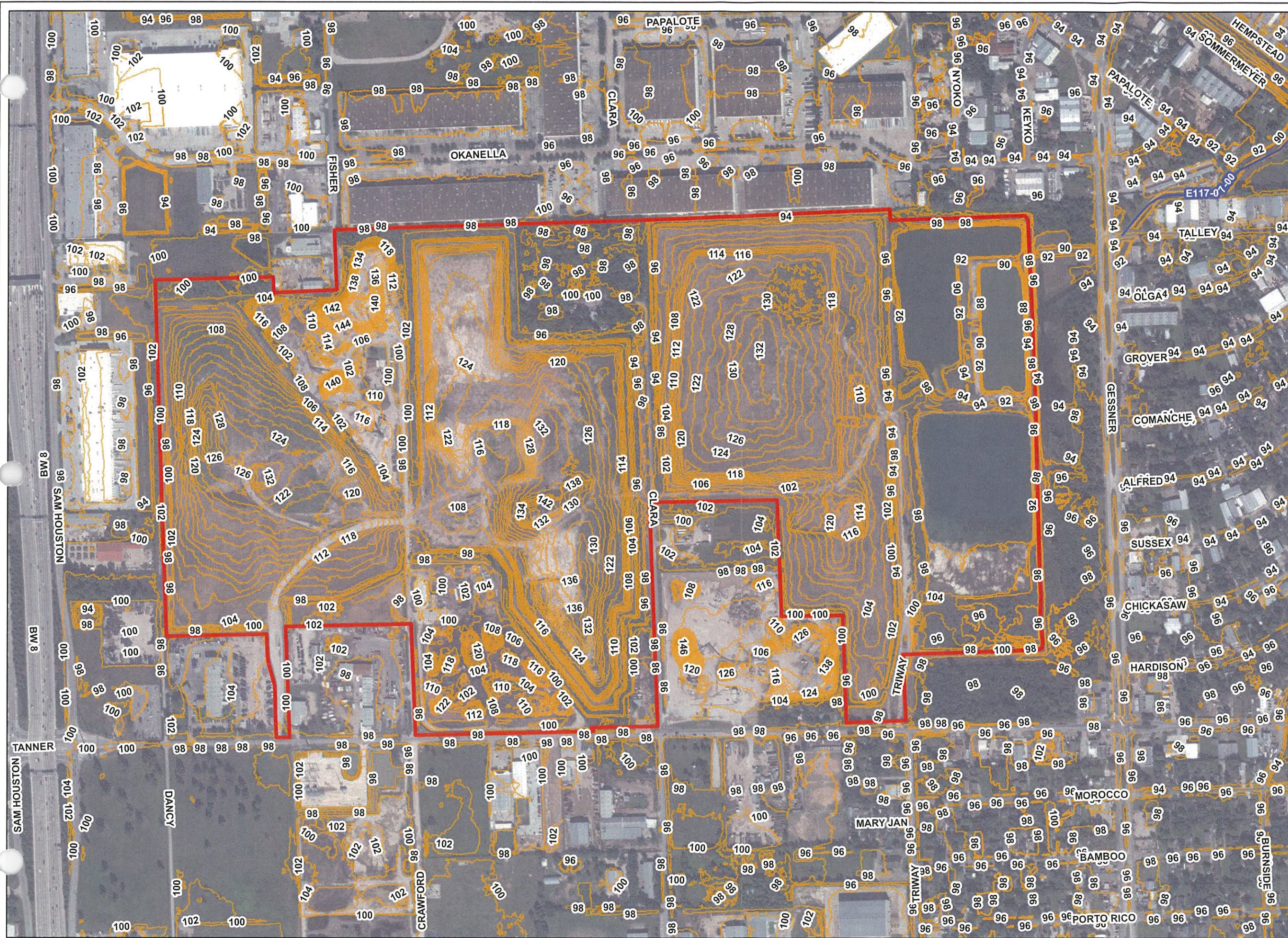
HAWTHORN PARK LANDFILL
CITY OF HOUSTON, HARRIS COUNTY, TEXAS



Disclaimer: This product is offered for informational purposes and may not have been prepared for or be suitable for legal, engineering, or surveying purposes. It does not represent an on-the-ground survey and represents only the approximate relative location of property, governmental and/or political boundaries or related facilities to said boundary. No express warranties are made by Jones & Carter, Inc. concerning the accuracy, completeness, reliability, or usability of the information included within this exhibit.



Path: K:\152221\15222-0002-000 Hawthorn Park\Permit\2 Design Phase\Analysis\GIS\WAXD\Ex1_VicinityMap.mxd User Name: T.M.F. Date: 7/27/2020 Project Number: 15222-0002-00



VICINITY MAP
1 INCH = 10 MILES

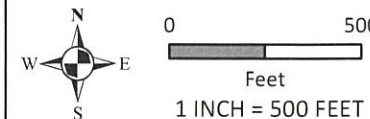
LEGEND

- 2018 2-ft Contours
- HCFCD Drainage Network
- Detention Service Area

*2019 ESRI IMAGERY

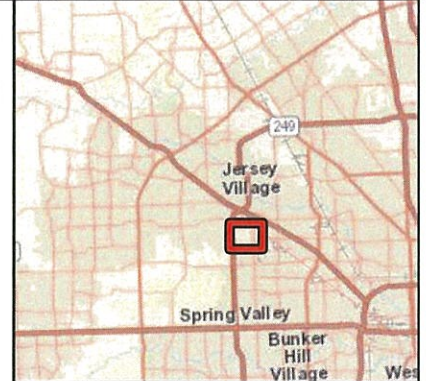
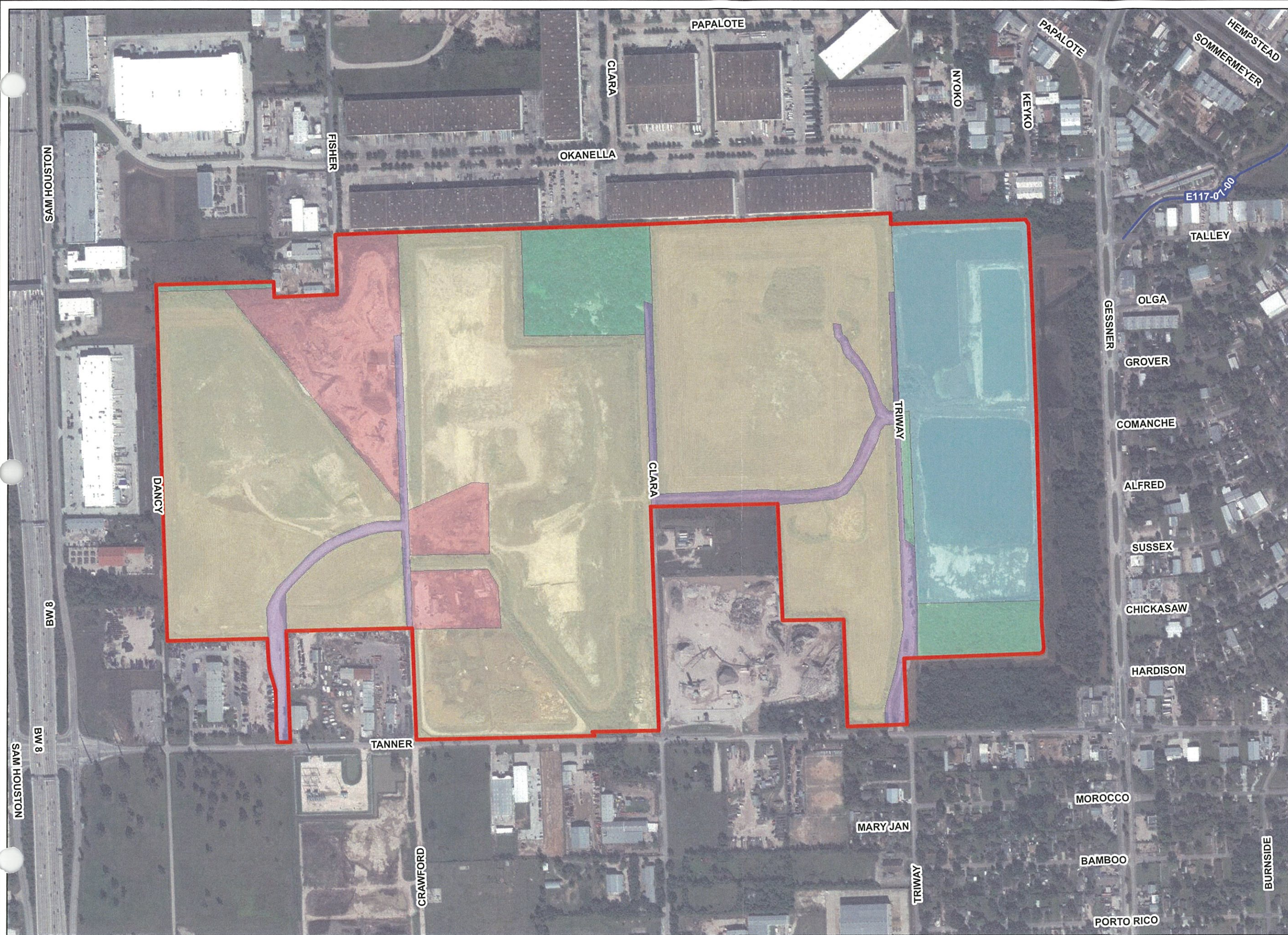
EXHIBIT 2
SITE TOPOGRAPHY

HAWTHORN PARK LANDFILL
CITY OF HOUSTON, HARRIS COUNTY, TEXAS



Disclaimer: This product is offered for informational purposes and may not have been prepared for or be suitable for legal, engineering, or surveying purposes. It does not represent an on-the-ground survey and represents only the approximate relative location of property, governmental and/or political boundaries or related facilities to said boundary. No express warranties are made by Jones & Carter, Inc. concerning the accuracy, completeness, reliability, or usability of the information included within this exhibit.





VICINITY MAP
1 INCH = 10 MILES

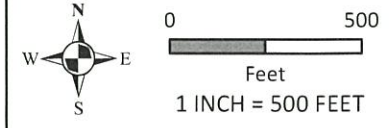
LEGEND

-  HCFCD Drainage Network
 -  Detention Service Area
- Existing Land Use**
-  Detention
 -  Industrial
 -  Landfill
 -  Roads
 -  Undeveloped

*2019 ESRI IMAGERY

**EXHIBIT 3
EXISTING LAND USE**

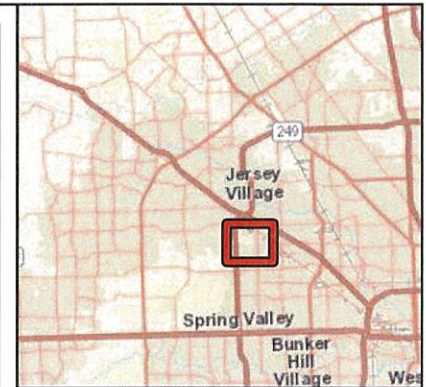
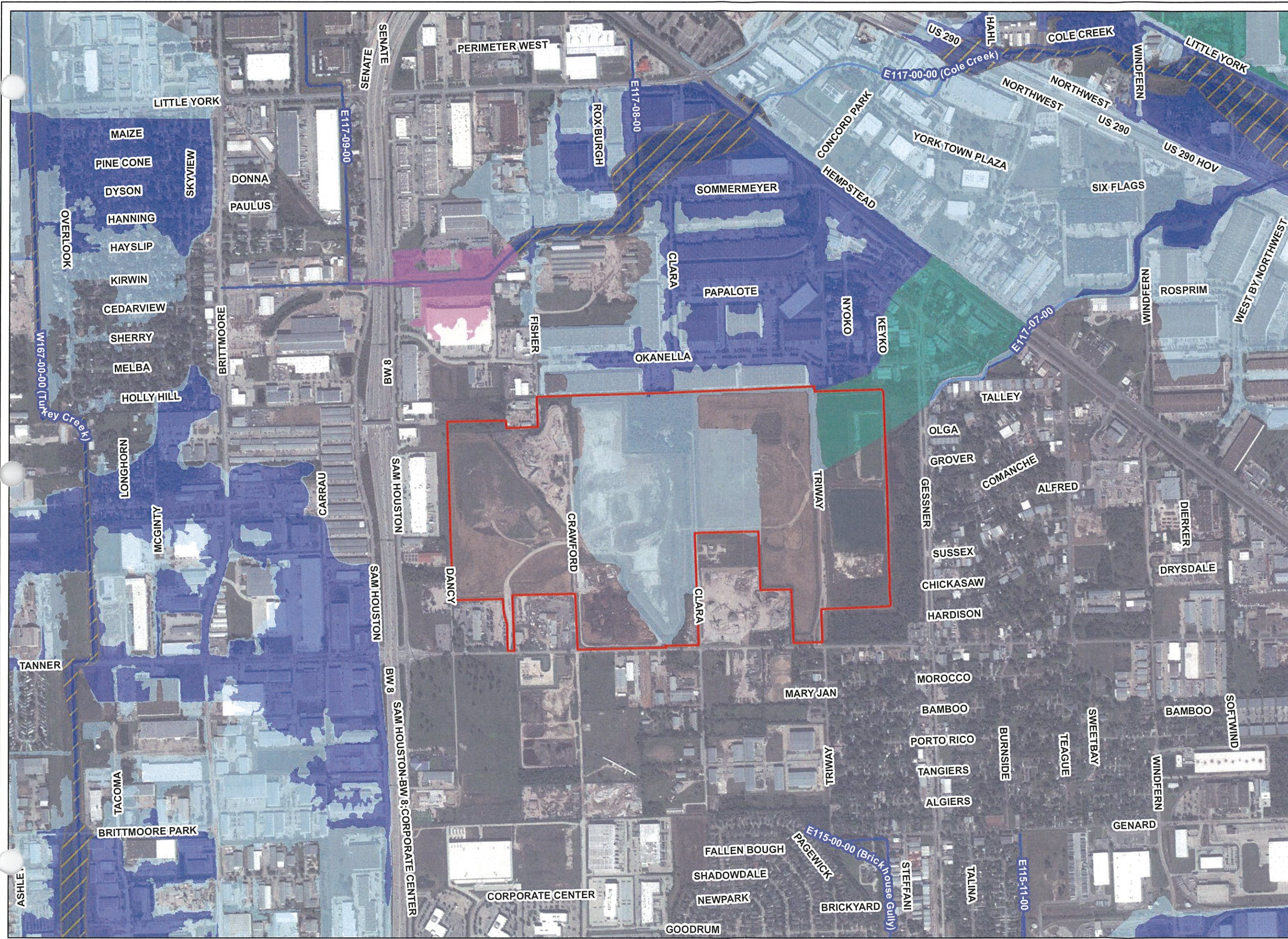
HAWTHORN PARK LANDFILL
CITY OF HOUSTON, HARRIS COUNTY, TEXAS



Disclaimer: This product is offered for informational purposes and may not have been prepared for or be suitable for legal, engineering, or surveying purposes. It does not represent an on-the-ground survey and represents only the approximate relative location of property, governmental and/or political boundaries or related facilities to said boundary. No express warranties are made by Jones & Carter, Inc. concerning the accuracy, completeness, reliability, or usability of the information included within this exhibit.










Path: K:\152221\15222-0002-00 Hawthorn Park Permit\2 Design Phase\Analysis\GIS\AWQ\E3_ExistingLandUse.mxd
 Project Number: 15222-0002-00
 Date: 2/27/2020
 User Name: TMF



VICINITY MAP
1 INCH = 10 MILES

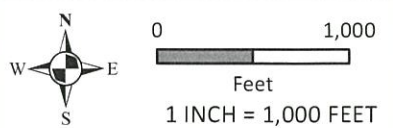
LEGEND

-  HCFCD Drainage Network
-  Detention Service Area
- Effective Flood Zones**
-  Zone A
-  Zone AE
-  Floodway Zone AE
-  Zone AO
-  Zone X (Shaded)

*2019 ESRI IMAGERY

**EXHIBIT 4
EFFECTIVE
FEMA FLOODPLAIN**

HAWTHORN PARK LANDFILL
CITY OF HOUSTON, HARRIS COUNTY, TEXAS

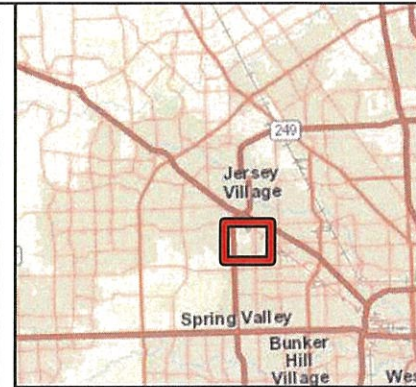
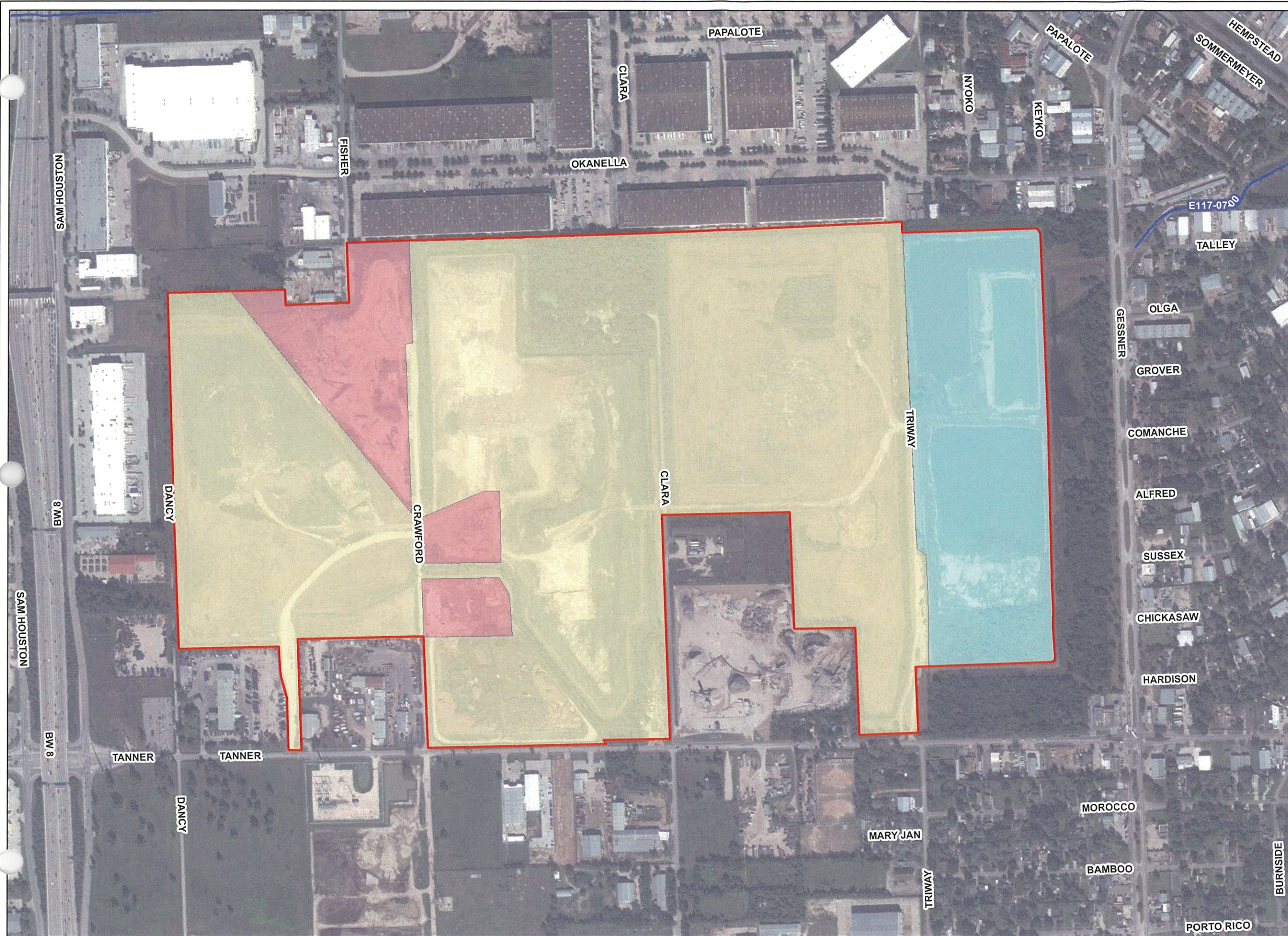


Disclaimer: This product is offered for informational purposes and may not have been prepared for or be suitable for legal, engineering, or surveying purposes. It does not represent an on-the-ground survey and represents only the approximate relative location of property, governmental and/or political boundaries or related facilities to said boundary. No express warranties are made by Jones & Carter, Inc. concerning the accuracy, completeness, reliability, or usability of the information included within this exhibit.



JONES CARTER
Texas Board of Professional Engineers Registration No. F-439

Date: 2/27/2020
 Project Number: 15222-0002-00
 User Name: TMF
 Path: K:\15222\15222-0002-00 Hawthorn Park Permit\2 Design Phase\Analysis\GIS\Map\Ex4_EffectiveFEMA floodplain.mxd



VICINITY MAP
1 INCH = 10 MILES

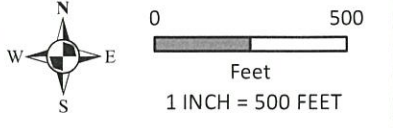
LEGEND

- Detention Service Area
- Proposed Land Use**
- Detention
- Industrial
- Landfill
- HCFCO Drainage Network

*2019 ESRI IMAGERY

**EXHIBIT 5
PROPOSED LAND USE**

HAWTHORN PARK LANDFILL
CITY OF HOUSTON, HARRIS COUNTY, TEXAS

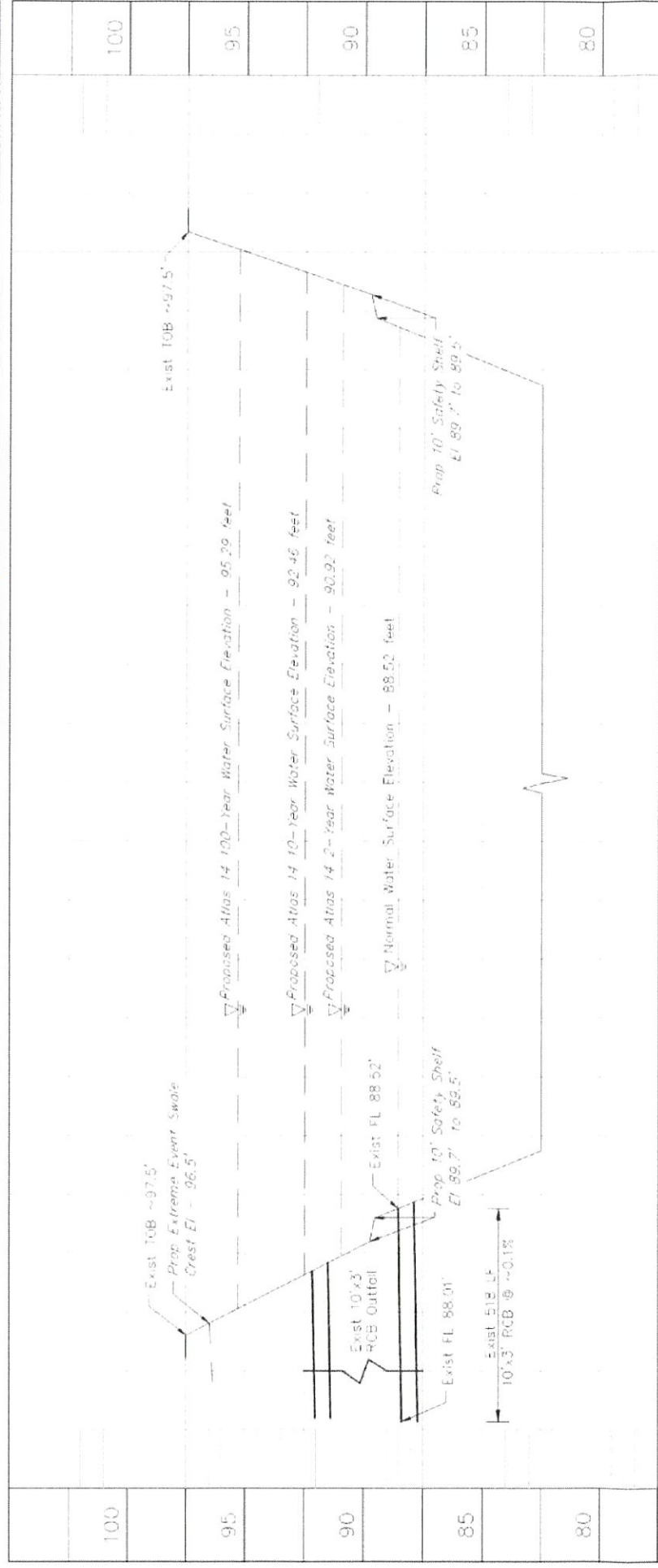


Disclaimer: This product is offered for informational purposes and may not have been prepared for or be suitable for legal, engineering, or surveying purposes. It does not represent an on-the-ground survey and represents only the approximate relative location of property, governmental and/or political boundaries or related facilities to said boundary. No express warranties are made by Jones & Carter, Inc. concerning the accuracy, completeness, reliability, or usability of the information included within this exhibit.



Path: K:\152221\15222-0002-00 Hawthorn Park Permits\2 Design Phase\Analysis\GIS\MAX\EX5_ProposedLandUse.mxd
 Project Number: 15222-0002-00 Date: 2/27/2020 User Name: TMF

EXHIBIT 6 PROPOSED DETENTION BASIN



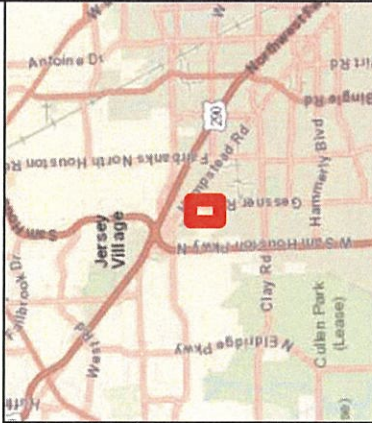
0+00 1+00 2+00 6+00 7+00 8+00
PROPOSED HAWTHORNE PARK DETENTION BASIN
 Scale: 1"=50' (H), 1"=5' (V)
 1 inch equals 200 feet



HAWTHORN PARK LANDFILL
 CITY OF HOUSTON, HARRIS COUNTY, TEXAS

LEGEND

- Detention Service Area
- HCFCD Drainage Network



VICINITY MAP
 Scale: 1 inch equals 5 miles

Disclaimer: This product is offered for informational purposes and may not have been prepared for or be suitable for legal, engineering, or surveying purposes. It does not represent an on-the-ground survey and represents only the approximate relative location of property, governmental and/or political boundaries or related facilities to said boundary. No express warranties are made by Jones & Carter, Inc. concerning the accuracy, completeness, reliability, or usability of the information included within this exhibit.



JONES CARTER
 Texas Board of Professional Engineers Registration No. F-439